

Figure 30 Fixed hinges worked poorly in the knee. The spherocentric knee prosthesis (on the right) was devised in an effort to permit motion in multiple planes. An example of a fixed hinge is on the left. (Reproduced with permission from Stryker Orthopaedics.)

Figures

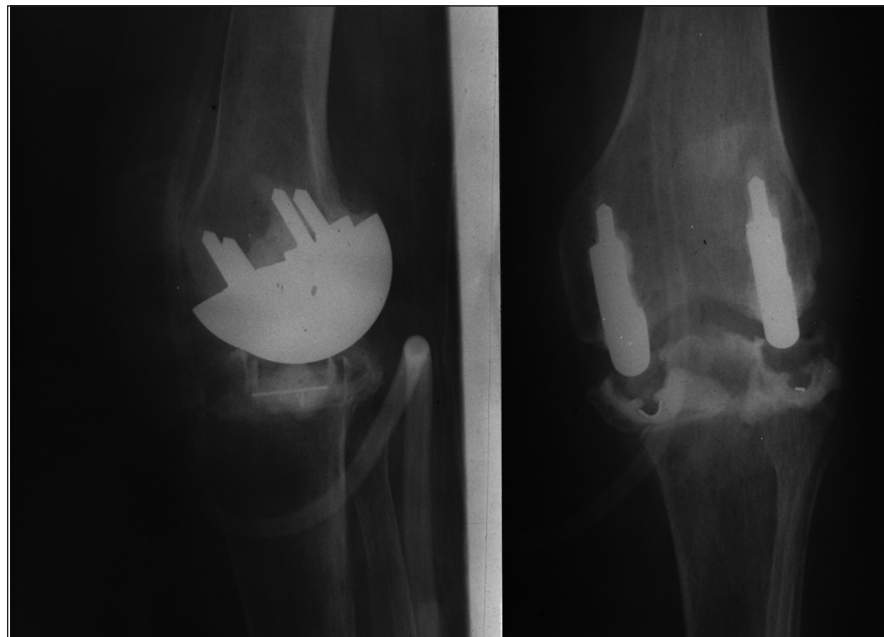


Figure 31 The Gunston prosthesis was one of the first to deal with the shifting center of rotation in the knee. (Reproduced with permission from Dr. John Gartland.)